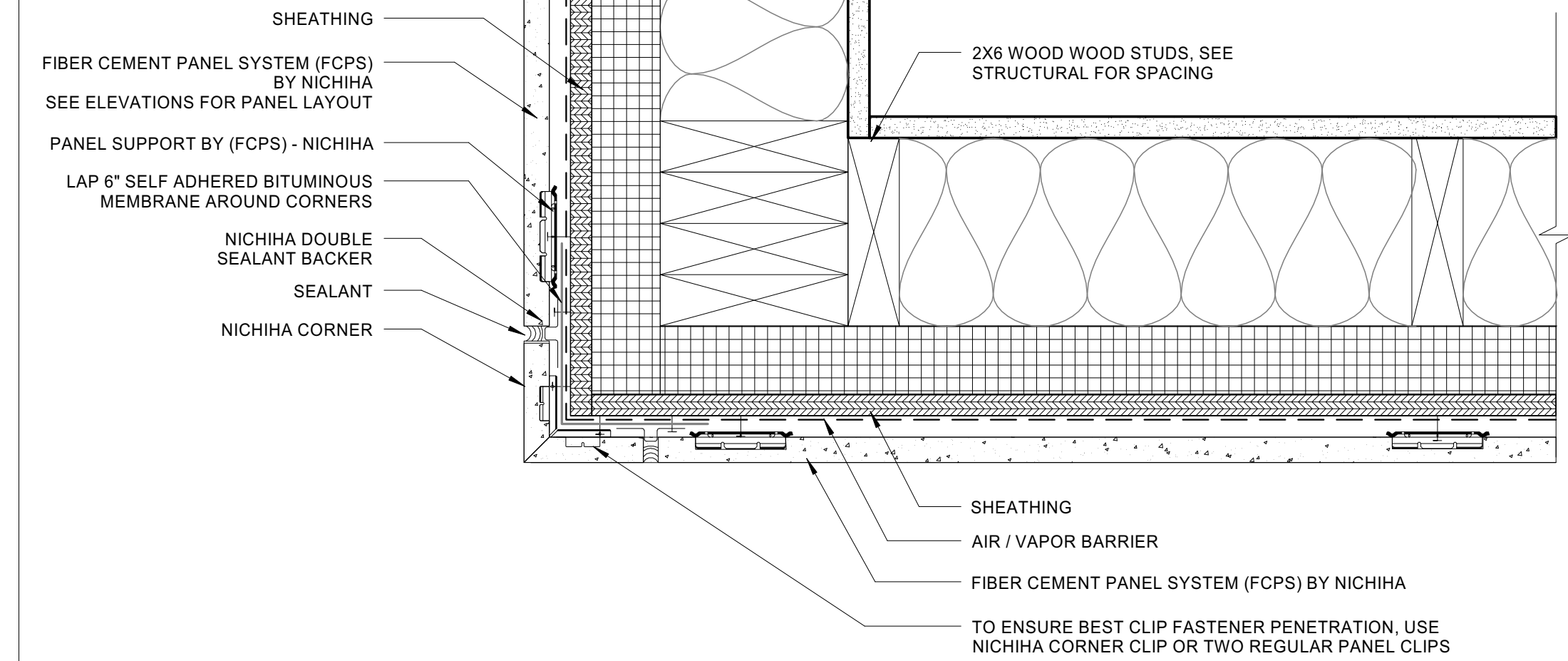




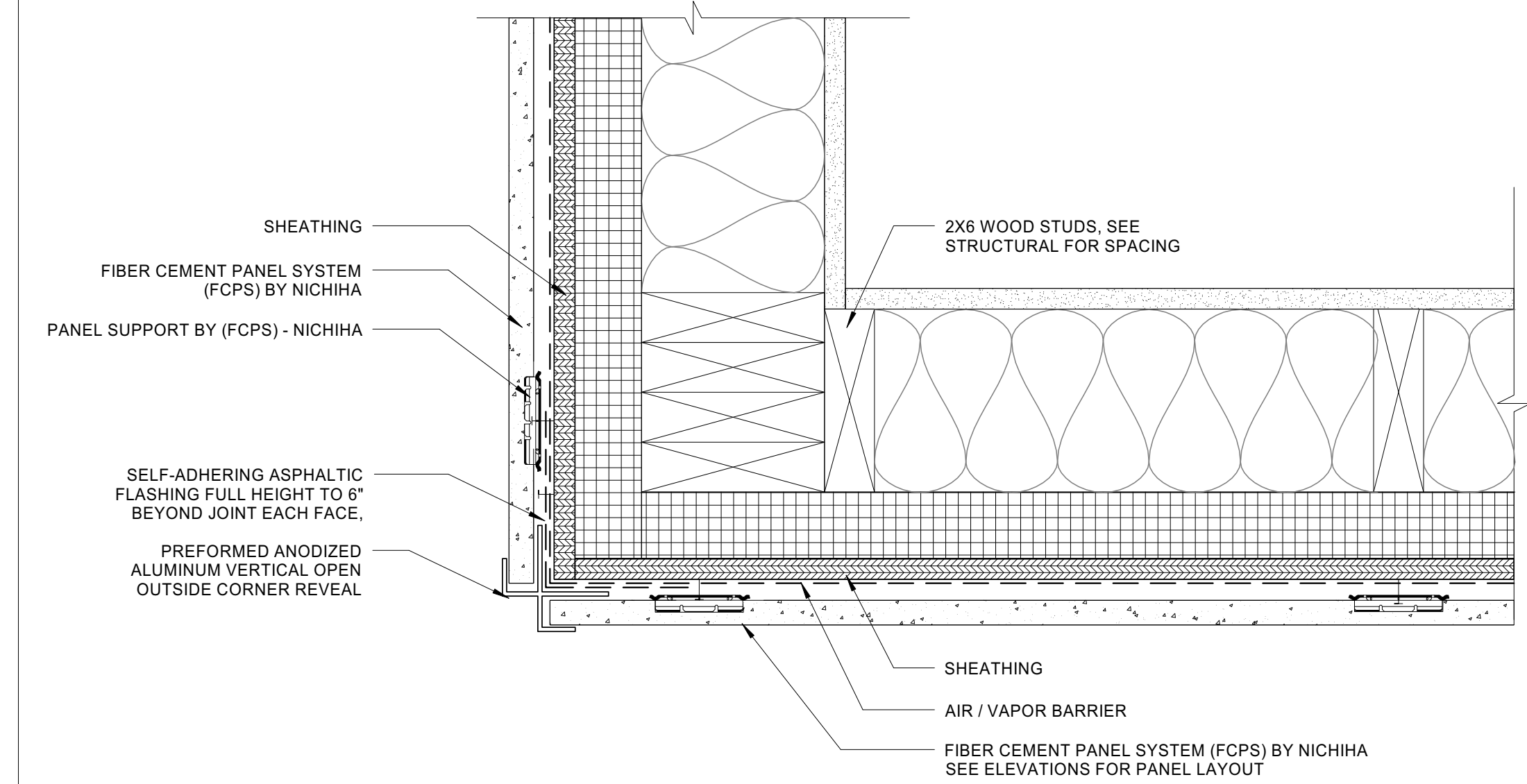
Reviewed for Code Compliance
Inspection Division
Approved with Conditions

Date: 05/16/14



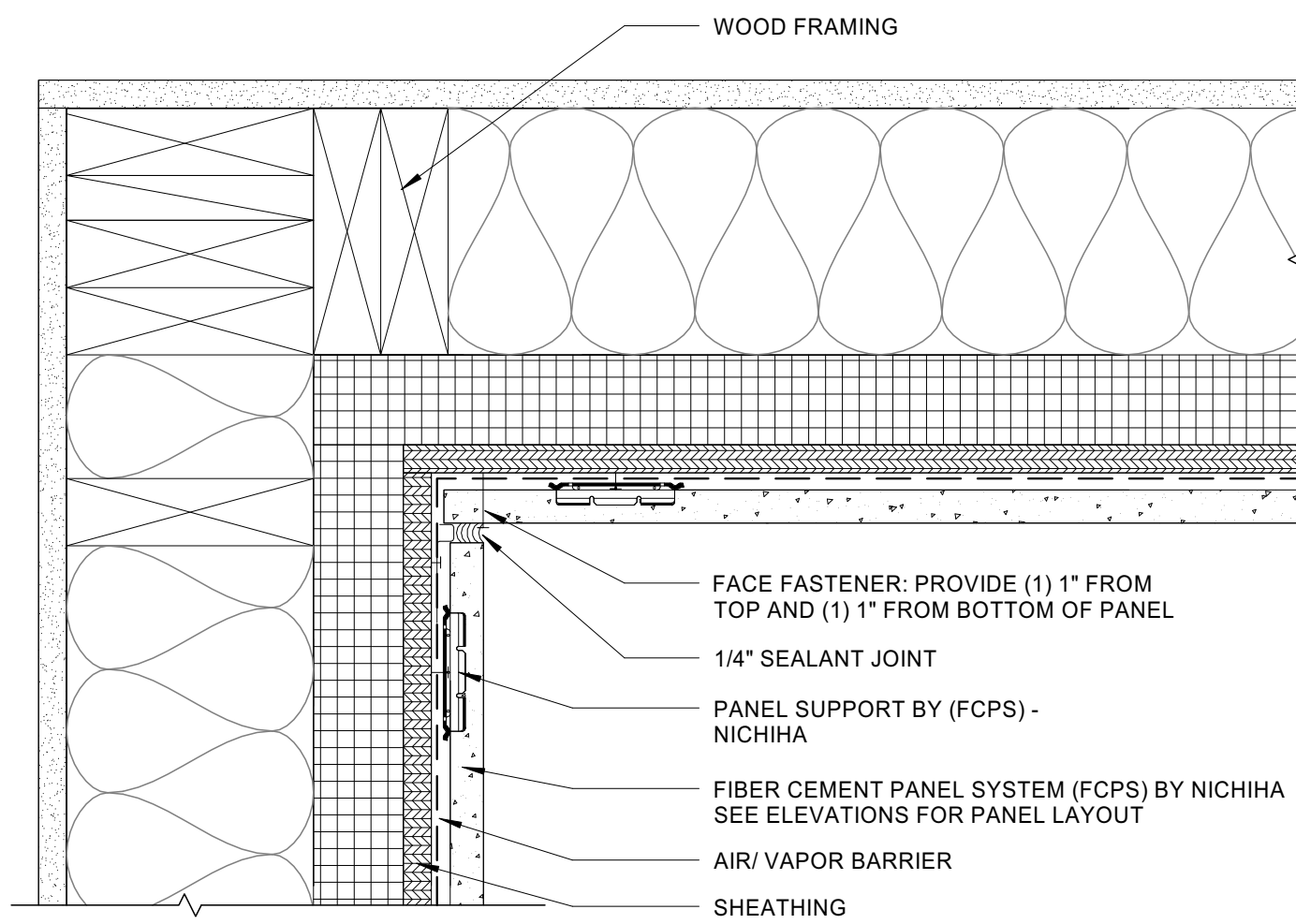
5 | EXTERIOR OUTSIDE CORNER - NICHHA PANEL

3" = 1'-0" 0 1 1/2' 3' 6' 10'



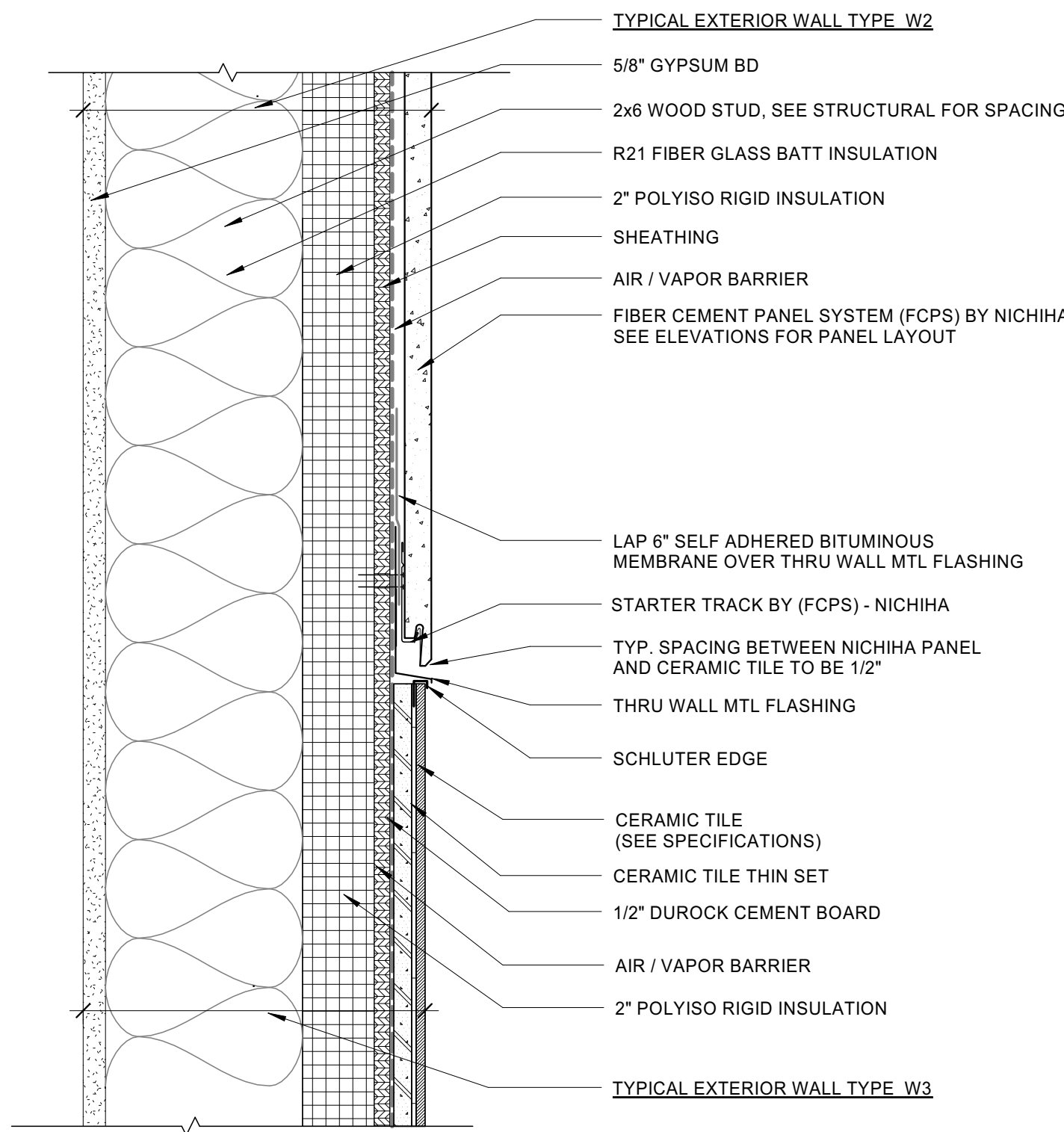
6 | EXTERIOR OUTSIDE CORNER - OPEN TRIM

3" = 1'-0" 0 1 1/2' 3' 6' 10'



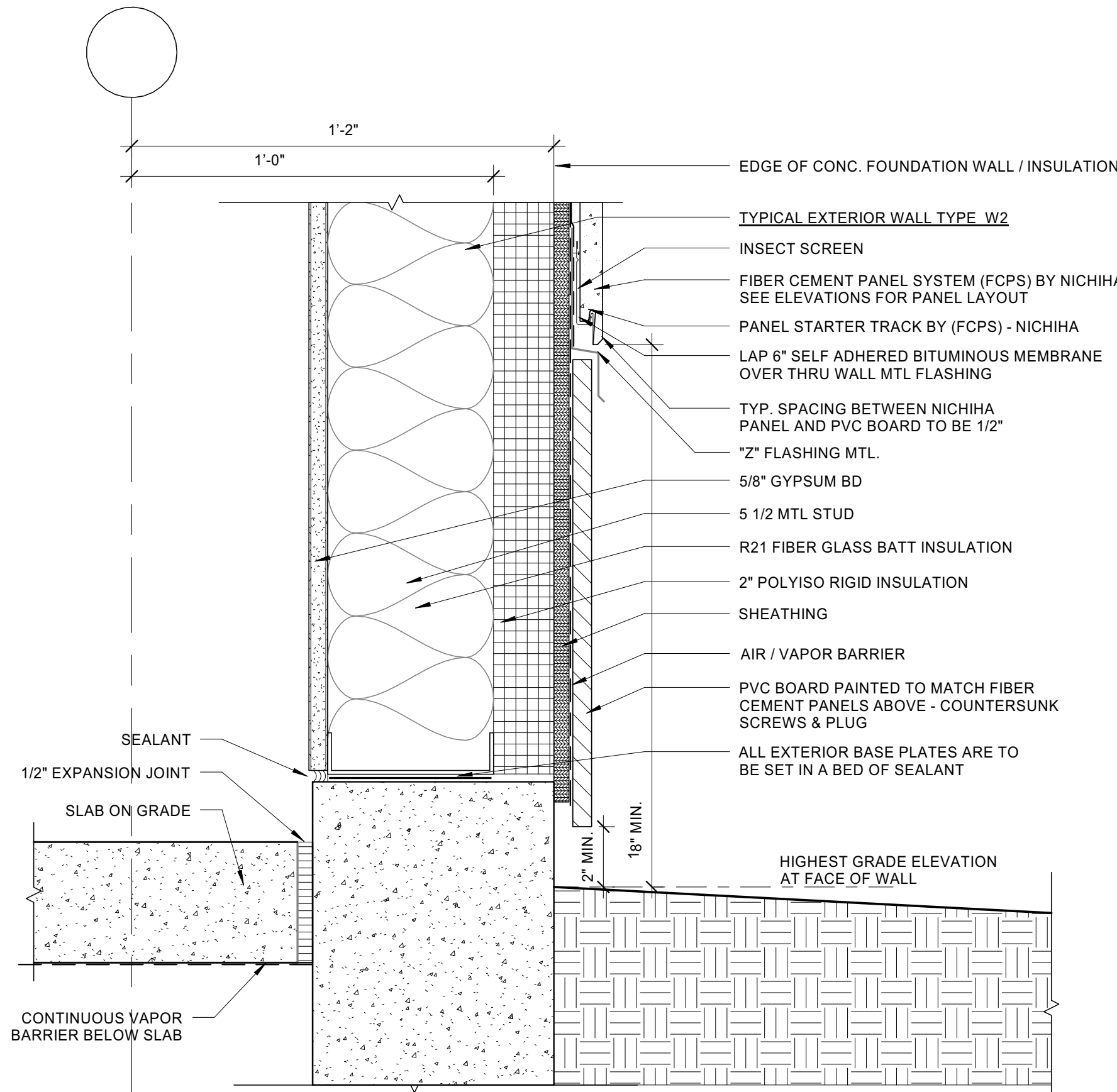
7 | EXTERIOR INSIDE CORNER

3" = 1'-0" 0 1 1/2' 3' 6' 10'



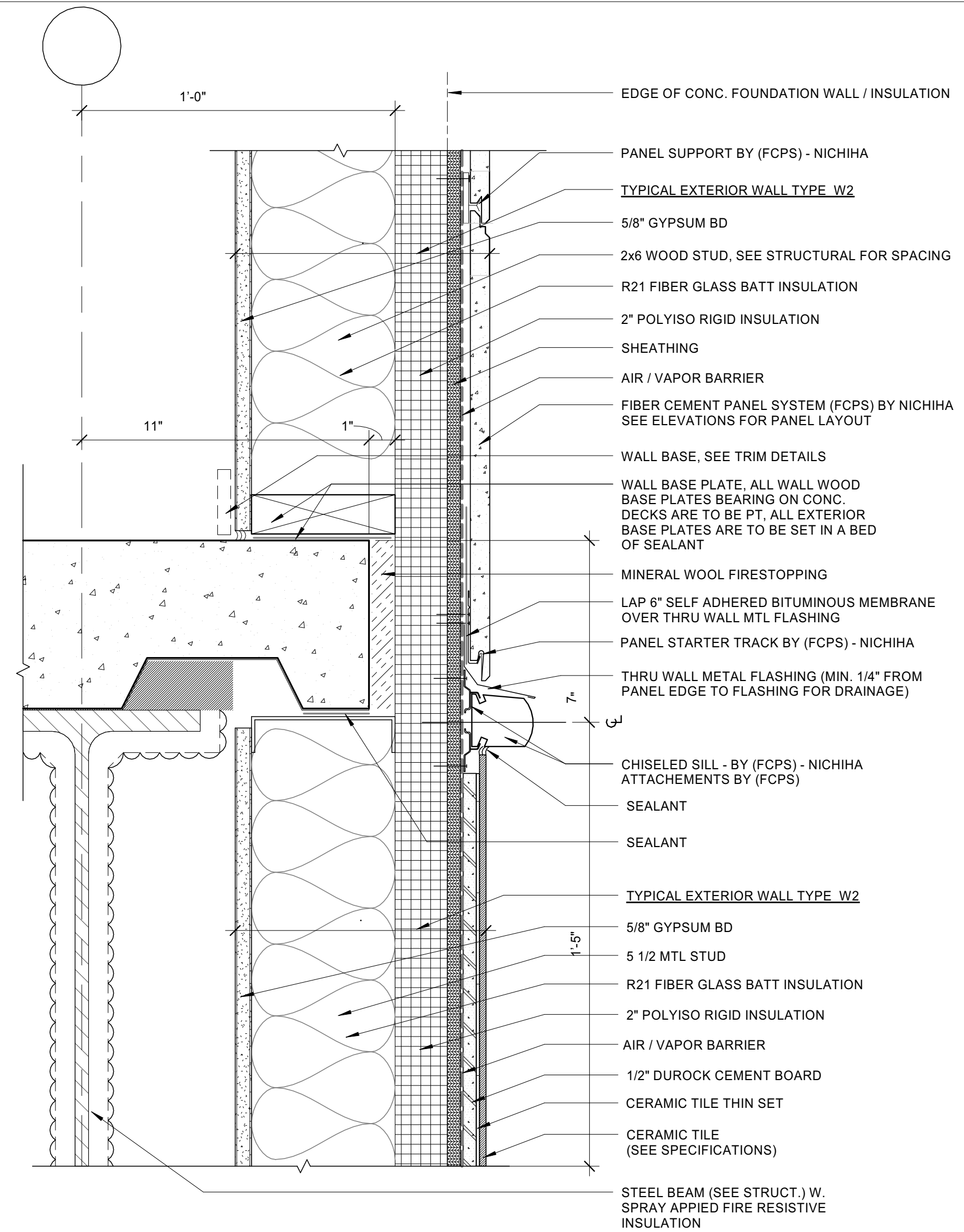
3 | EX. HORIZONTAL MATERIAL TRANSITION - METAL FLASHING

3" = 1'-0" 0 1 1/2' 3' 6' 10'



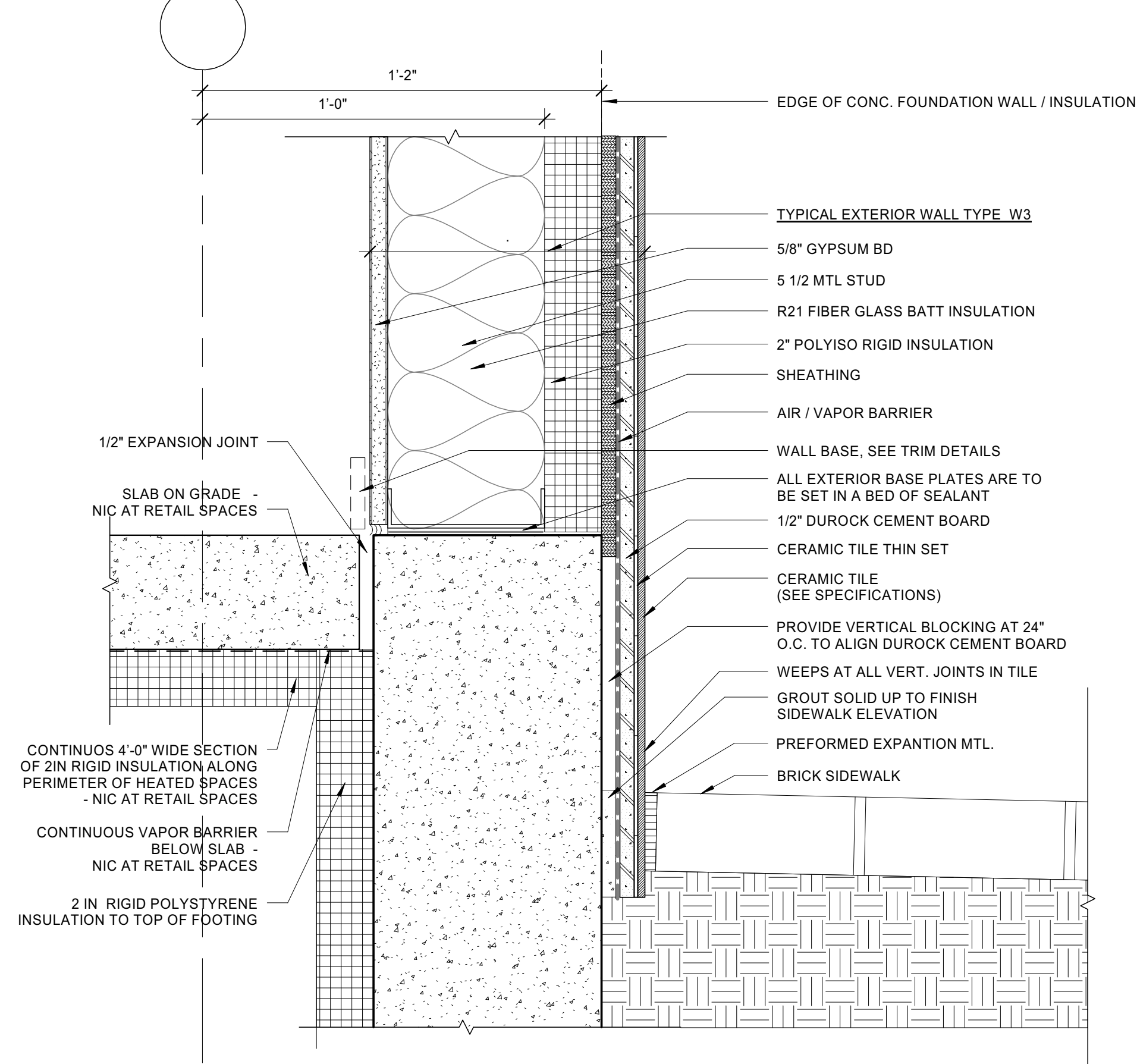
4 | BASE OF WALL AT GARAGE

3" = 1'-0" 0 1 1/2' 3' 6' 10'



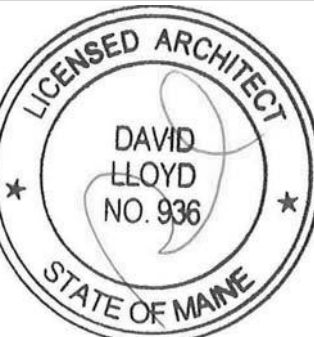
1 | EXTERIOR HORIZONTAL MATERIAL TRANSITION

3" = 1'-0" 0 1 1/2' 3' 6' 10'



2 | BASE OF WALL AT TILE

3" = 1'-0" 0 1 1/2' 3' 6' 10'



Prepared For:
118 on Munjoy Hill, LLC
118 CONGRESS STREET
PORTLAND, ME 04101

Consultant:

Architect:
ARCHETYPE architects
48 Union Wharf Portland, Maine 04101
(207) 772-6022 Fax (207) 772-4056

Project:

118 ON MUNJOY HILL
118 CONGRESS STREET
PORTLAND, MAINE

Revisions:

Scale:

Date:

07 MAR 2014

3" = 1'-0"

EXTERIOR DETAILS

A5.01